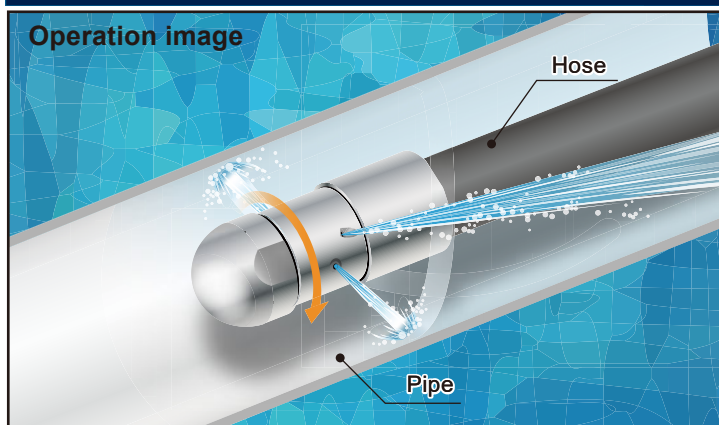


High-Pressure Rotating Pipe Cleaning Nozzles

RSP-R



FEATURES

- Rotating by spray reaction force. Self-moving inside the pipe.
- Rotating solid stream jets with a high spray impact clean thoroughly the entire inner surface of a pipe.
- Compact design. Made of special stainless steel with excellent wear resistance.

APPLICATIONS

Cleaning inside pipes, drains, and distribution pipes,
Removing scale and dirt inside tubes of heat

MATERIALS

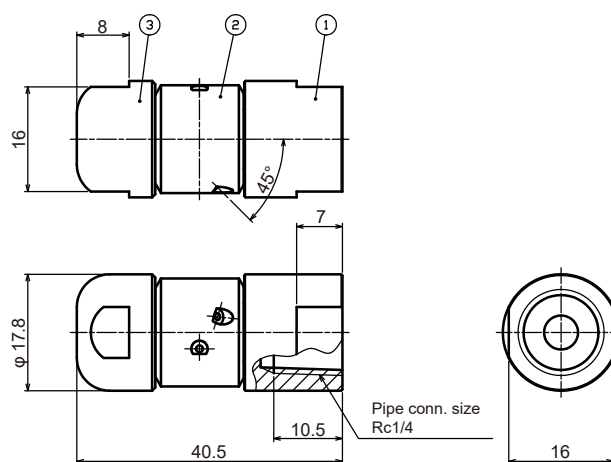
RSP-R series	
Structure	<ul style="list-style-type: none"> • Made of metal. • Comprises a connecting adaptor, nozzle body, and cap.
Material	<ul style="list-style-type: none"> • HS (Hardened stainless steel)
Mass	<ul style="list-style-type: none"> • 60 g

Max. allowable temperature: 150°C (300°F).

Max. operating pressure: 10 MPa (1,450 psi)

[Note] Appearance and dimensions may differ slightly depending on materials and nozzle codes.

DRAWING



①Connecting adaptor ②Nozzle body (Rotating part) ③Cap

SPECIFICATIONS

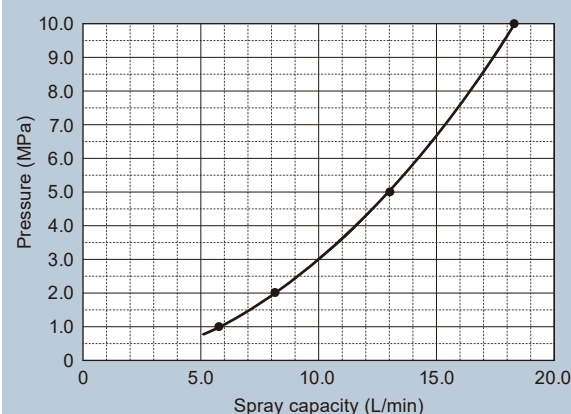
Spray capacity (L/min)			
1 MPa	2 MPa	5 MPa	10 MPa
5.8	8.2	13.0	18.3

HOW TO ORDER

Please inquire or order using this product code.

1/4F RSP 58R HS

FLOW-RATE DIAGRAM



Please feel free to send any inquiry, request for information or quote on this product to the contacts below.



“The Fog Engineers”
H. IKEUCHI & CO., LTD.

Headquarters

Daiichi Kyogyo Bldg., 1-15-15, Awaza, Nishi-ku, Osaka 550-0011, Japan

TEL: 81-6-6538-4015 FAX: 81-6-6538-4022

E-mail: overseas@kirinoikeuchi.co.jp

URL: <https://www.kirinoikeuchi.co.jp/eng/>

We have our branches and affiliate companies around the world—in China, USA, The Netherlands, Thailand, Indonesia, UAE, and more. Please see our website for the nearest contact.

<https://www.kirinoikeuchi.co.jp/eng/company/location/>