

**DDRP**  
series

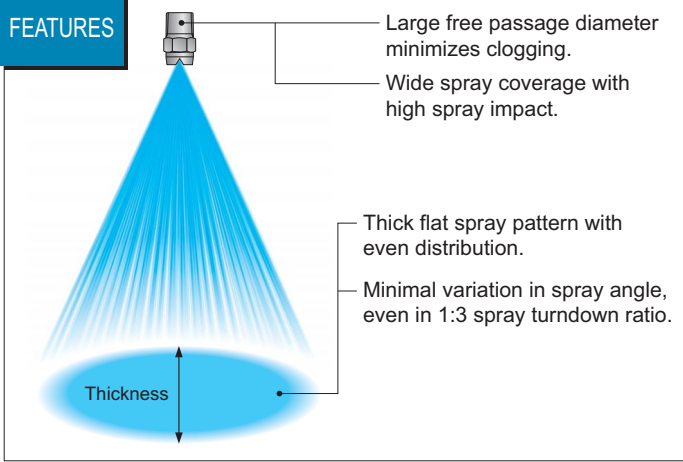
# Ultra-Thick Flat Spray Nozzles with Even Distribution

Steel making/ Rolling mill/  
Plate mill

- Cooling
- Cleaning after pickling



**FEATURES**



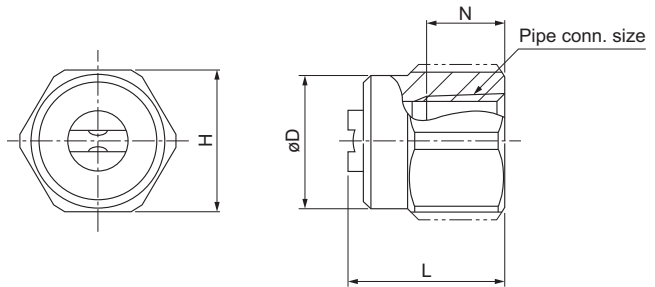
**DDRP series**

**MATERIAL** S303

**STRUCTURE** Simple one-piece structure to be screwed into a pipe, no whirler inside.

Pipe conn. size	Dimensions (mm)				Mass (g)
	L	H	øD	N	
Rc1/4	21	19	18	10.5	30
Rc3/8	26	21	19	11	40
Rc1/2	32	26	25	14	80
Rc3/4	40	32	31	15	140
Rc1	48	41	40	17	300

[Note] Appearance and dimensions may differ slightly depending on materials and nozzle codes.



Spray angle code	Width	Thick-ness	Spray capacity code	Pipe conn. size	Spray angle (°) in width			Spray angle (°) in thickness			Spray capacity (ℓ/min)							Mean drop. dia. (μm)	Free pass. dia. (mm)			
					0.1 MPa	0.3 MPa	1 MPa	0.1 MPa	0.3 MPa	1 MPa	0.05 MPa	0.1 MPa	0.15 MPa	0.2 MPa	0.3 MPa	0.5 MPa	0.7 MPa			1 MPa	1.5 MPa	2 MPa
115	60	Rc1/4	50	112	115	116	58	60	60	2.15	2.98	3.61	4.13	5.00	6.42	7.57	9.02	11.0	12.7	300	1.4	
			100	113	115	116	58	60	60	4.31	5.97	7.22	8.26	10.0	12.8	15.1	18.0	22.0	25.3	390	2.0	
			120	113	115	116	58	60	60	5.17	7.16	8.66	9.92	12.0	15.4	18.2	21.6	26.4	30.4	460	2.2	
		140	113	115	116	58	60	60	6.03	8.35	10.1	11.6	14.0	18.0	21.2	25.3	30.8	35.5	670	2.4		
		200	113	115	116	58	60	60	8.62	11.9	14.4	16.5	20.0	25.7	30.3	36.1	44.0	50.7	430	2.9		
		260	113	115	116	58	60	60	11.2	15.5	18.8	21.5	26.0	33.4	39.4	46.9	57.2	65.9	460	3.3		
	90	45	Rc1/2	300	113	115	116	59	60	60	12.9	17.9	21.7	24.8	30.0	38.5	45.4	54.1	66.0	76.0	480	3.5
				500	113	115	116	59	60	60	21.5	29.8	36.1	41.3	50.0	64.2	75.7	90.2	110	127	550	4.5
				800	113	115	116	59	60	60	34.5	47.7	57.8	66.1	80.0	103	121	144	176	203	630	5.8
			1000	113	115	116	59	60	60	43.1	59.7	72.2	82.6	100	128	151	180	220	253	670	6.5	
			Rc3/8	50	88	90	90	42	45	45	2.15	2.98	3.61	4.13	5.00	6.42	7.57	9.02	11.0	12.7	310	1.4
				100	89	90	90	42	45	45	4.31	5.97	7.22	8.26	10.0	12.8	15.1	18.0	22.0	25.3	410	2.1
120	89	90		90	43	45	45	5.17	7.16	8.66	9.92	12.0	15.4	18.2	21.6	26.4	30.4	410	2.3			
Rc1/2	140	89	90	90	43	45	45	6.03	8.35	10.1	11.6	14.0	18.0	21.2	25.3	30.8	35.5	410	2.5			
	200	89	90	90	43	45	45	8.62	11.9	14.4	16.5	20.0	25.7	30.3	36.1	44.0	50.7	460	2.9			
	260	89	90	90	43	45	45	11.2	15.5	18.8	21.5	26.0	33.4	39.4	46.9	57.2	65.9	490	3.4			
Rc3/4	300	89	90	91	43	45	45	12.9	17.9	21.7	24.8	30.0	38.5	45.4	54.1	66.0	76.0	510	3.7			
	500	89	90	91	43	45	45	21.5	29.8	36.1	41.3	50.0	64.2	75.7	90.2	110	127	580	4.7			
	800	89	90	91	43	45	45	34.5	47.7	57.8	66.1	80.0	103	121	144	176	203	660	5.9			
Rc1	1000	89	90	91	43	45	45	43.1	59.7	72.2	82.6	100	128	151	180	220	253	700	6.3			

Conversion of unit [Pressure] 0.1 MPa ≈ 14.50 psi [Flow rate] 1 ℓ (liter) ≈ 0.26 US gal.  
10 psi ≈ 0.07 MPa 1 US gal. ≈ 3.79 ℓ (liter)

## How to order

Please inquire or order for a specific nozzle using this coding system.

\*\*M" indicates male thread (R) and "F" indicates female thread (Rc).  
To order, please specify the pipe connection size by replacing respectively "R" and "Rc" by "M" and "F" as in the above chart.

<Example> 1/4F DDRP 115 60 50 S303

