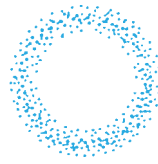


Flange-connection, Large Capacity Hollow Cone Spray Nozzles

Made-to-Order

TAA



[Spray pattern]



[Spray distribution]

- Stable hollow cone spray pattern, even at low pressures, because of the unique vortex chamber design.
- Made of highly wear-resistant SiC (silicon nitride bonded silicon carbide).
- Flange connection.
- Lightweight, weighing less than half of comparable metal nozzles.

[STANDARD PRESSURE]

0.07 MPa

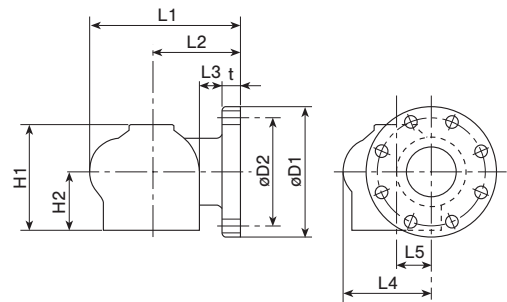
[APPLICATIONS]

- Absorption tower of flue gas desulfurization equipment
- Spraying slurry

| | |
|-----------|--|
| Structure | <ul style="list-style-type: none"> • One-piece cast-molded ceramic. • Flanged connection. |
| Material | <ul style="list-style-type: none"> • SiC (silicon nitride bonded silicon carbide) <p>SPECIAL ORDER MATERIAL: SiSiC (sintered reaction-bonded silicon carbide)</p> |

| Flange size (inch) | Spray capacity code | Dimensions (mm) | | | | | | | | | | Flange bolt holes (JIS 10K) | | Weight (kg) |
|--------------------|---------------------|-----------------|-----|----|-----|----|-----|-----|-----|-----|----|-----------------------------|---------------|-------------|
| | | L1 | L2 | L3 | L4 | L5 | H1 | H2 | øD1 | øD2 | t | Number of holes | Diameter (mm) | |
| 2 | 200 | 151 | 99 | 37 | 74 | 28 | 102 | 57 | 155 | 120 | 22 | 4 | 19 | 1.8 |
| | 300 | 169 | 106 | 37 | 90 | 35 | 112 | 62 | 155 | 120 | 22 | 4 | 19 | 2.0 |
| 3 | 400 | 184 | 114 | 37 | 100 | 38 | 129 | 71 | 185 | 150 | 24 | 8 | 19 | 3.1 |
| | 500 | 202 | 122 | 37 | 116 | 45 | 145 | 82 | 185 | 150 | 24 | 8 | 19 | 3.7 |
| | 650 | 210 | 125 | 36 | 124 | 49 | 150 | 85 | 185 | 150 | 24 | 8 | 19 | 4.0 |
| | 800 | 210 | 125 | 36 | 124 | 49 | 150 | 85 | 185 | 150 | 24 | 8 | 19 | 4.0 |
| 4 | 1000 | 253 | 154 | 55 | 143 | 56 | 177 | 100 | 210 | 175 | 24 | 8 | 19 | 6.0 |
| | 1200 | 271 | 161 | 55 | 159 | 63 | 187 | 105 | 210 | 175 | 24 | 8 | 19 | 6.8 |

DRAWING



[Note] Appearance and dimensions may differ slightly depending on material and nozzle code.

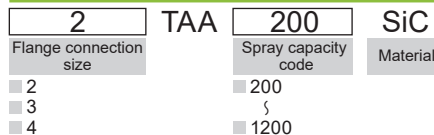
| Spray capacity code | Flange connection size (inch) | | | Spray angle (°) | | | Spray capacity (L/min) | | | | | Mean droplet diameter (µm) | Free passage diameter (mm) |
|---------------------|-------------------------------|---|---|-----------------|----------|---------|------------------------|----------|----------|---------|----------|----------------------------|----------------------------|
| | 2 | 3 | 4 | 0.03 MPa | 0.07 MPa | 0.1 MPa | 0.03 MPa | 0.05 MPa | 0.07 MPa | 0.1 MPa | 0.15 MPa | | |
| 200 | ○ | | | 62 | 67 | 69 | 133 | 170 | 200 | 237 | 288 | 1,800 | 28 |
| 300 | ○ | | | 62 | 67 | 69 | 199 | 255 | 300 | 356 | 432 | 2,100 | 31 |
| 400 | | ○ | | 62 | 67 | 69 | 266 | 340 | 400 | 474 | 576 | 2,100 | 38 |
| 500 | | ○ | | 62 | 67 | 69 | 332 | 425 | 500 | 592 | 720 | } | 41 |
| 650 | | ○ | | 62 | 67 | 69 | 432 | 552 | 650 | 770 | 936 | | 50 |
| 800 | | ○ | | 75 | 80 | 82 | 532 | 680 | 800 | 950 | 1,154 | 3,600 | 57 |
| 1000 | | | ○ | 75 | 80 | 82 | 665 | 850 | 1,000 | 1,187 | 1,442 | 3,600 | 68 |
| 1200 | | | ○ | 75 | 80 | 82 | 798 | 1,020 | 1,200 | 1,424 | 1,731 | 3,800 | 68 |

[Note] 1. Since TAA series nozzles are cast molded, the spray capacity is guaranteed within +/-10% and the spray angle within +/-7° under standard pressure.
2. The tightening torque to connect the flange must not exceed 30 N-m per bolt.

HOW TO ORDER

To inquire about or order a specific nozzle please refer to this coding system.

Example: 2 TAA 200 SiC



This nozzle series is made-to-order.

TWAA, TAA-PP SERIES Made-to-Order

Also available are TWAA series nozzles for two-directional spray and TAA series nozzles made of chemical-resistant PP.

| Series | Picture | Structure | Features | Series | Picture | Structure | Features |
|----------|---------|-----------|---|--------|---------|-----------|---|
| TWAA-SiC | | | <ul style="list-style-type: none"> • Two-directional (opposite directions) jet nozzle made of SiC ceramic. | TAA-PP | | | <ul style="list-style-type: none"> • Hollow cone spray nozzle made of PP. • Chemical-resistant and lightweight. |